

## SERVICE INSTRUCTION

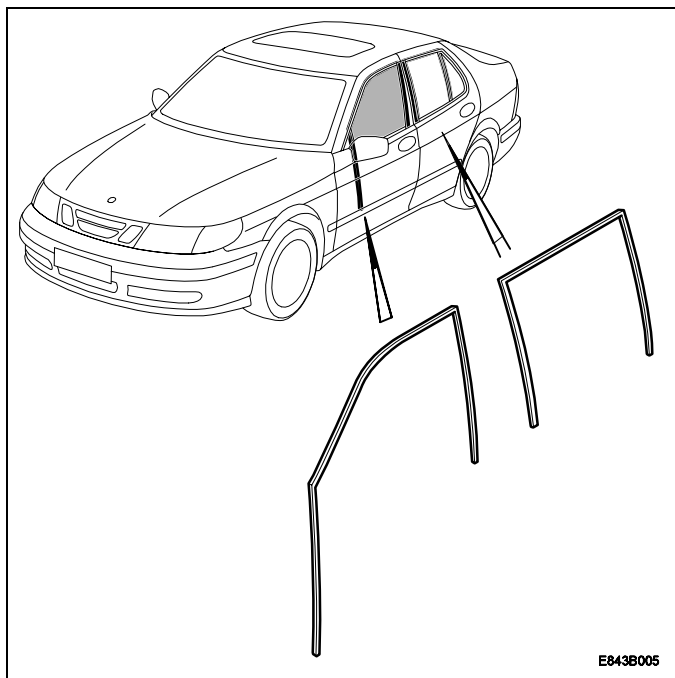
**Number:** 843-1953

**Year:** 1998

**Month:** OKTOBER

**Market:** ALL

### Juddering side windows (unsmooth operation)



#### Cars affected

Saab 9-5 up to and including VIN

X3001194 (US/CA) and W3075121 (other markets)

#### Background

The side windows can occasionally judder when being raise and lowered.

This is because the pop rivets behind the window moulding are too long. The resulting friction between the moulding and glass is too great. In addition, the window mounting require adjustment.

To resolve a customer complaint, the following procedure can be performed.

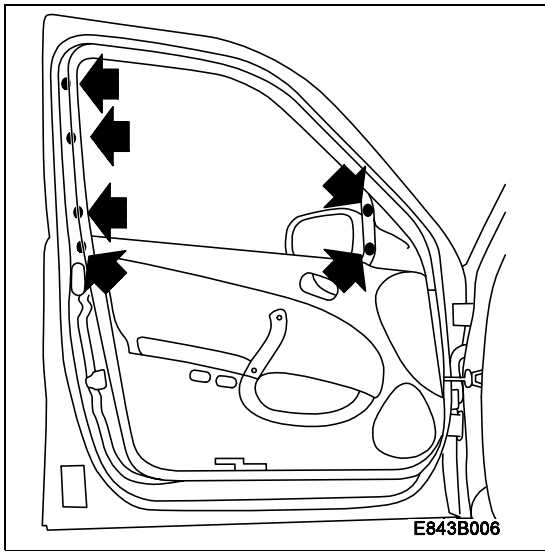
#### Parts required

(16) 30 32 497 Spray, can with removable tube

79 72 516 Pop rivet, 3 pcs (as necessary)

46 85 632 Pop rivet, 3 pcs (as necessary)

### Diagnostic procedure



- 1 Clean the glass of any paint protector.
- 2 Lower the side window, insert a blunt object into the weatherstrip and see if any of the pop rivets are protruding.

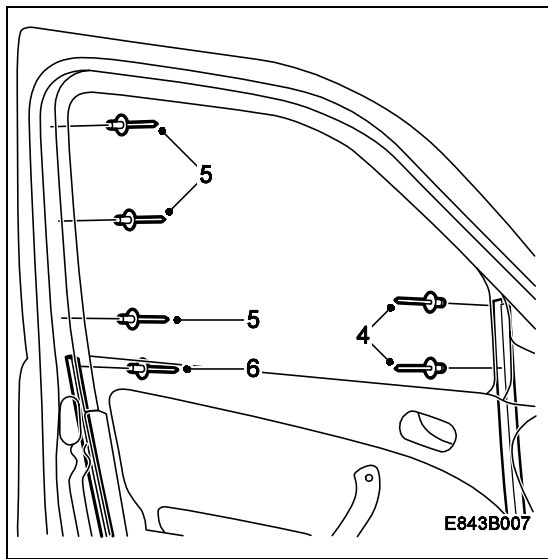
#### NOTE

Do **not** use a pointed or sharp object.

If the rivets are correctly mounted; continue with step 9.

If any of the rivets stick out; continue with step 3.

- 3 Loosen the front or rear edge of the window moulding.

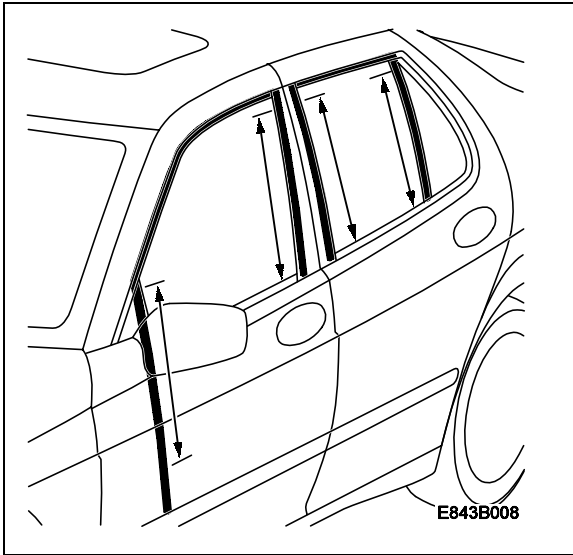


- 4 Inspect the two pop rivets (part no. 79 72 516) at the front edge of the moulding.
- 5 Inspect the three pop rivets (part no. 46 85 632) at the rear edge of the moulding (B pillar).
- 6 Inspect the pop rivet (part no. 79 72 516) at the lower rear edge.
- 7 Drill out any defective pop rivets and fit new ones.
- 8 Clean any drill cuttings from the moulding and refit it.

**NOTE**

Check the rivets once more before refitting the moulding.

9 Spray the **inside** of the seal with part no. (16) 30 32 497. Use the long tube on the spray bottle.



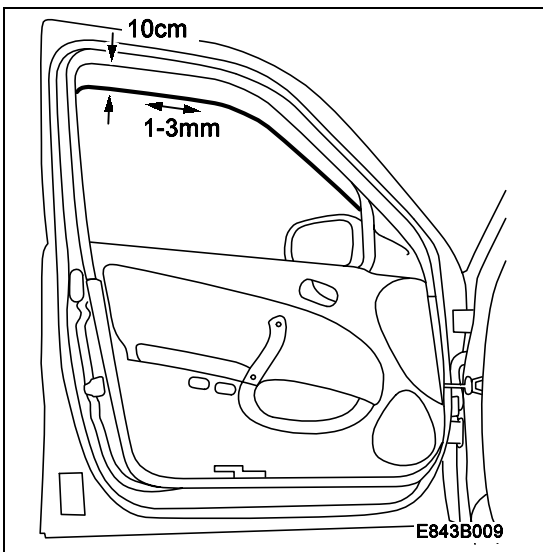
10 Wipe off any excess part no. (16) 30 32 497 from the moulding. Raise and lower the window five times to spread the lubricant.

11 Check the function.

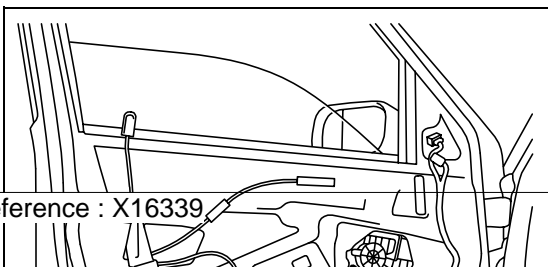
If the problem persists; continue with step 12.

If the function is correct; clean the glass.

12 Check the window adjustment by lowering it 10 cm and grasping the to edge of the glass. If the window cannot be moved back and forth 1-3 mm, the following adjustment must be made.



13 Remove the door trim and water barrier, see WIS 8, Body, Interior equipment, Door trim.



14 Undo the two screws on the rear guide rail. Grasp the top edge of the window and pull it back towards the B pillar. Pull the rail downwards until  $1 \pm 0.5$  mm of the oval hole is visible. Tighten the screws.

15 Check the function.

16 If the window still judders the rear end of the guide rail can be raised 0.5 mm.

17 Check the function.

18 Refit the door trim and water barrier, see WIS 8, Body, Interior equipment, Door trim.  
Polish the window.

**Warranty/Time information**

Failed Object: 84321 / 84323

Fault/Reason Code: 47

Location Code: 09

Warranty Type (US): 01

Labour Operation (US): See below

Diagnostic procedure	Repair/Action Code	Time
Spraying	05	0.1 hrs
Changing pop rivets and spraying	01	0.2 hrs
Spraying and adjustment of window	03 (US: 05)	0.3 hrs
Changing pop rivets, spraying and adjustment of window	10	0.6 hrs