

SERVICE INFORMATION

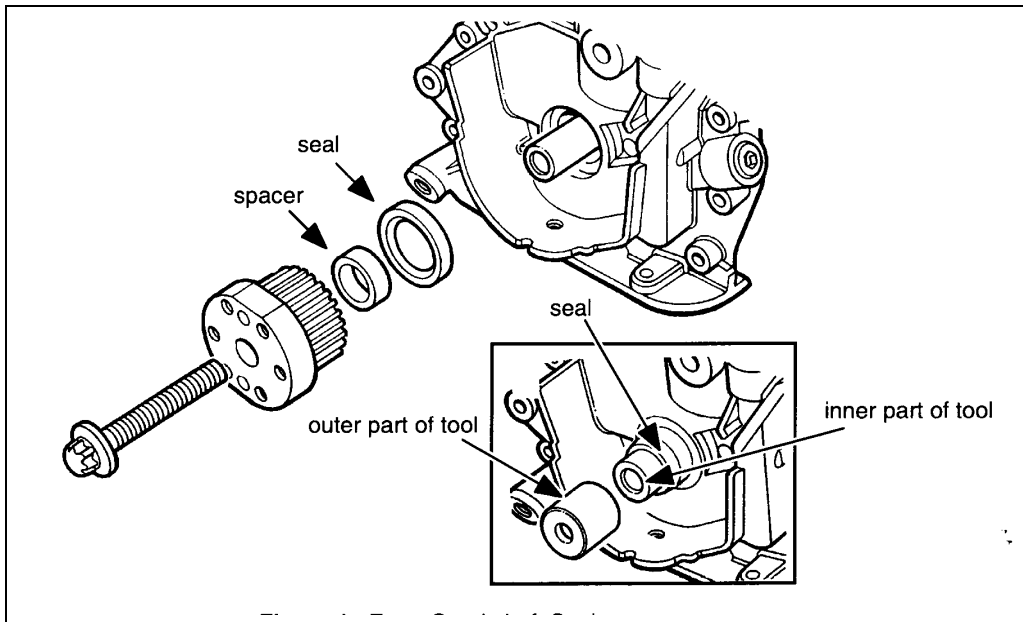
Number: 216-9007

Year: 1994

Month: APRIL

Market: US

Crankshaft seal



Background

The correct part number and procedure for replacing the front crankshaft seal on 1994-98 900 models equipped with the V6 engine is as outlined below.

Cars affected:

1994-98 900 with V6 engine

Materials:

Front crankshaft seal: 46 22 296

Action:

- 1 Fit the inner part of tool, P/N 83 94 942, on the crankshaft. Lubricate the seal and fit it on the crankshaft.
Tap the seal into place, using the outer part of tool, P/N 83 94 942.
- 2 Fit the spacer ring and crankshaft pulley.
Tightening torque: 250Nm + 45°ring; (184.5ft. + 45°ring;).