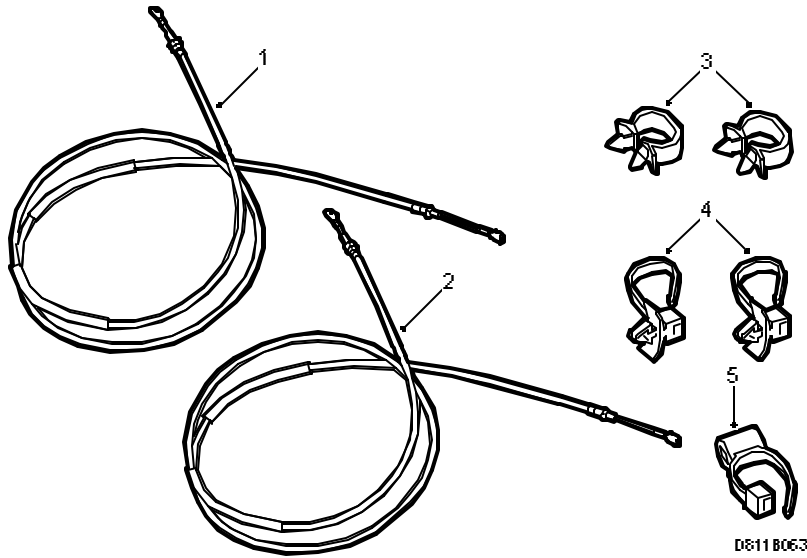


**SERVICE INFORMATION**

Bulletin Nbr: 811-1989  
Date:.....December 1998  
Market: all

**The soft top does not open.**



**Cars concerned**

Saab 9-3 CV M98 up to and incl. chassis no. W7054661 respective X7002303.

**Background**

On certain cars, the soft top latch does not open fast enough or fully when the soft top is to be opened. This may result in the soft top getting stuck, thus breaking off the lock pin in the drive mechanism for the soft top cover.

The reason for the locks not opening may be depend on the cables to the lock for the soft top cover. These may have excessive internal friction or they may be deformed.

The problem is rectified by changing to a new, stronger and more flexible cables. The friction is thus decreased.

In addition, the mounting of the cables to the chassis is also changed.

Perform the repair in case of customer complaints.

**Materials**

- 1) 51 11 653 Cable, left side (CA: 30577776)
- 2) 51 11 661 Cable, right side (CA: 30577777)
- 3) 85 30 917 Cable clips (2 pcs) (CA: 30514349)
- 4) 85 52 663 Cable ties (2 pcs) (CA: 30514976)
- 5) 48 07 939 Cable ties (1 pc) (CA: 30514976)

Fabric-backed tape

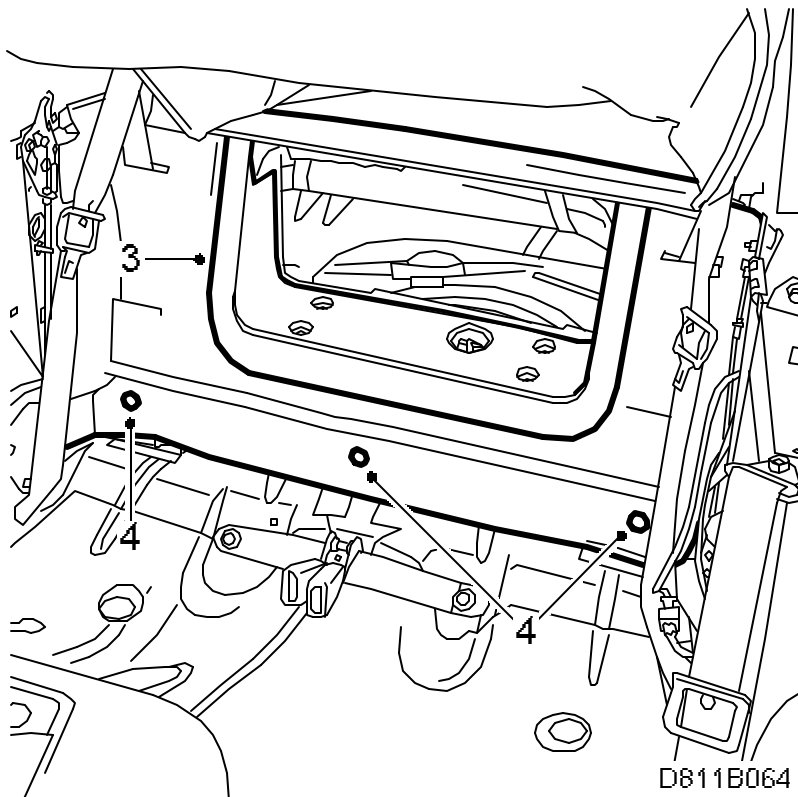
**Tools**

82 93 177 Soft top adjustment gauge

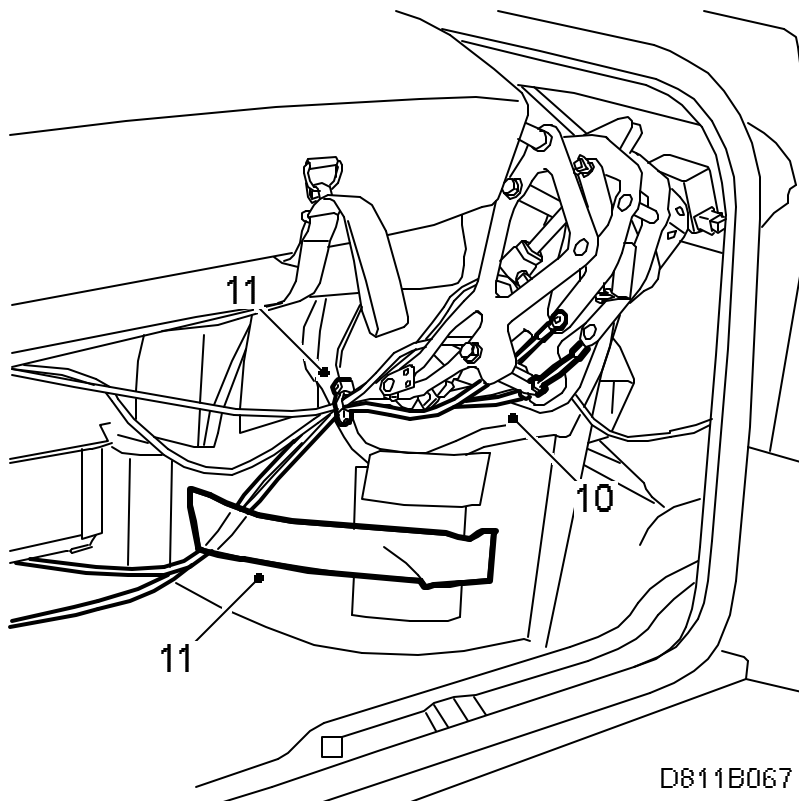
(CA: 30581884)

**Diagnostic procedure**

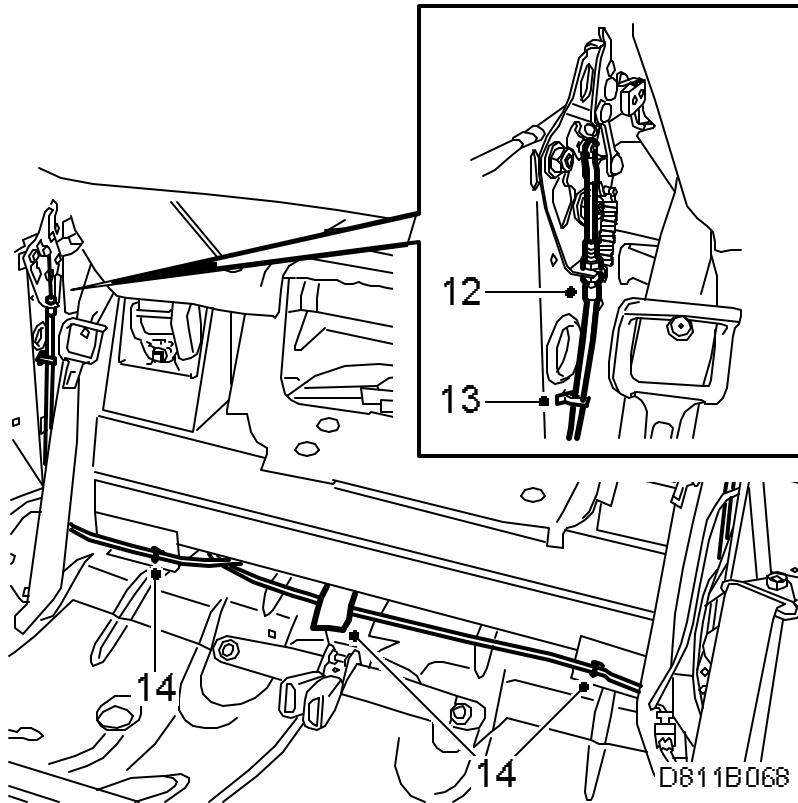
1. Run the soft top to closed position with fifth bow raised and the soft top cover lowered.
2. Remove the backrest cushion and the rear side trim. See "8. Convertible 9-3, Adjustment and replacement, Backrest cushion". →
3. Remove the cover over the hydraulic unit.



4. Loosen the lower edge of the trim towards the luggage compartment and fold it up.
5. Disconnect the cables on the right and left sides by the lock for the soft top cover. Remove the cable ties and the fabric-backed tape.
6. Hang up the stowage bag.
7. Remove the side trim on the right side and the floor mat in the luggage compartment. (The side trim on the left side does not have to be removed). See "8. Convertible 9-3, Adjustment and replacement, Luggage compartment trim". →
8. Disconnect the cables from the drive mechanism for the soft top cover, and also remove cable ties and fabric-backed tape.
9. Remove the cables.
10. Fit the new cables to the drive mechanism for the soft top cover.
11. Fit a new cable tie (part no. 48 07 939) and new fabric-backed tape.



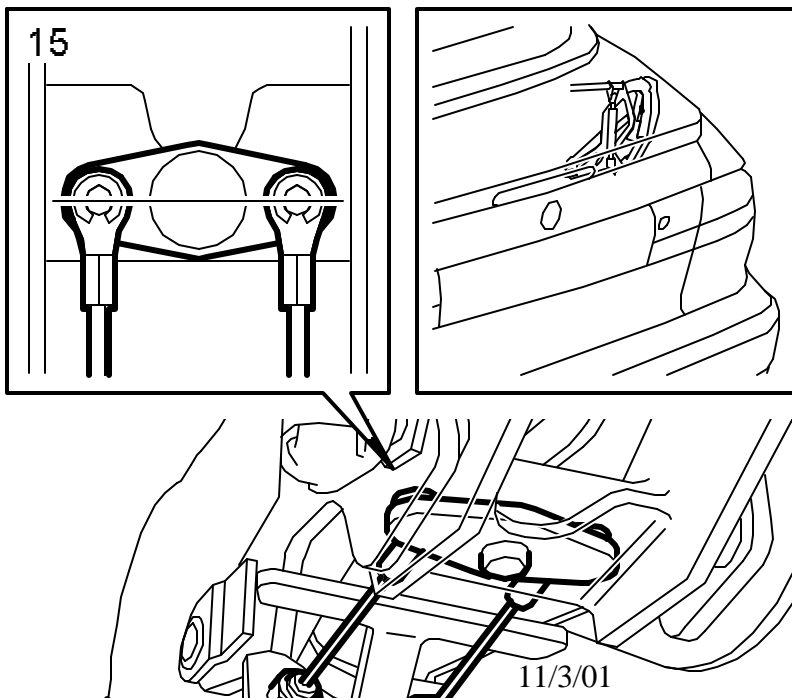
12. Fit the cables to the lock for the soft top cover. →



13. Fit two cable clips (part no. 85 30 917).

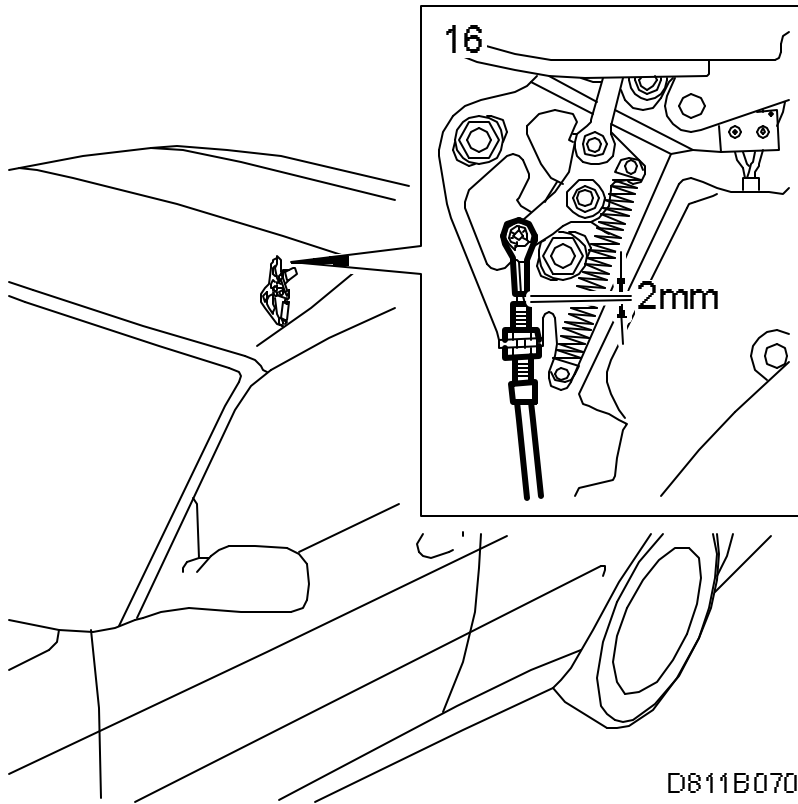
14. Fit two cable ties (part no. 85 52 663) and new fabric-backed tape.

15. Adjust both cables for the soft top cover so that the lever on the drive mechanism is horizontal when the lock is locked.



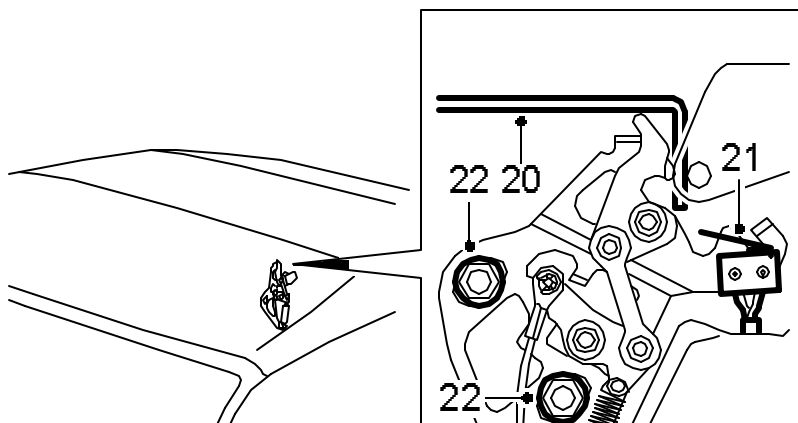


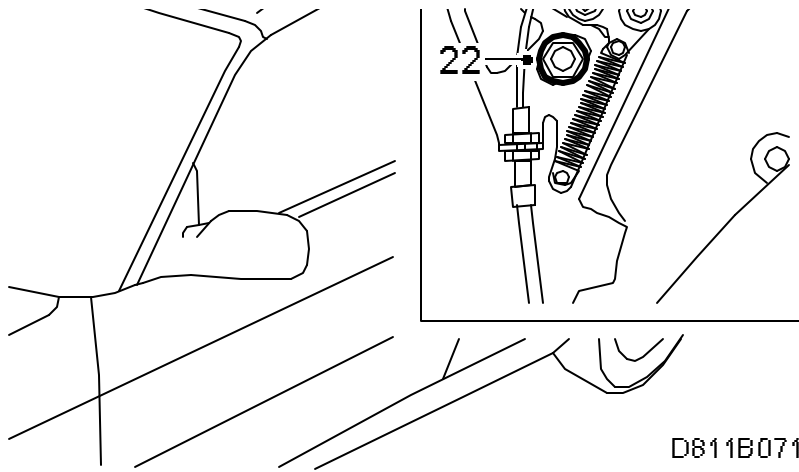
- 16. Check that the distance between the cable adjustment and the end of the cable is at least 2 mm.



D811B070

- 17. Adjust the cable using the cable adjustments by the locks.
- 18. Check that the locks open completely.
- 19. After fitting the new cables, also check the lock for the soft top cover and, if needed, adjust.





l-1989) The soft top does not open.

---

**Important**

This adjustment is very important since the lock fitting can hook onto the lock which means that the lock pin in the soft top cover drive mechanism can break.

---

- 20. Raise the soft top cover so much that special tool 82 93 177 can be fitted as shown in the illustration.
- 21. Check that the soft top cover lock fitting enters the lock easily without touching the tool. Listen for a "clicking" sound when the microswitch is activated. If the lock fitting touches the lock, the lock must be adjusted forward in the car.
- 22. Adjustment:
  - Loosen the two nuts that hold the lock and press the lock forward. Tighten the nuts.
  - Return to step 20 and check the adjustment.
  - When closing, the soft top cover may "bang" in the locks. In this case, adjust the locks down so that the seals contact the the soft top cover.

---

**Important**

Check the lock pin in the drive mechanism. If the lock pin has been severed, the soft top cover will act almost normally, since the friction in the joint may be sufficient to operate the soft top cover. In such a case, the soft top cover will "bang" when closing.

---

- 23. Fit the cover over the hydraulic unit.

24. Fit the backrest cushion and the rear side trim. See "8. Convertible 9-3, Adjustment and replacement, Backrest cushion". →
25. Fit the side trim and the floor mat in the luggage compartment. See "8. Convertible 9-3, Adjustment and replacement, Luggage compartment trim". →
26. Check that the soft top works correctly.

#### Warranty/Time information

Failed Object: 81419

Fault/Reason code: 37

Location code: 09

Warranty Type (US): 01

Repair/Action code: 01

Labour operation (US): Straight time 1.6 (CA: B3278 1.6)

Time: 1.6