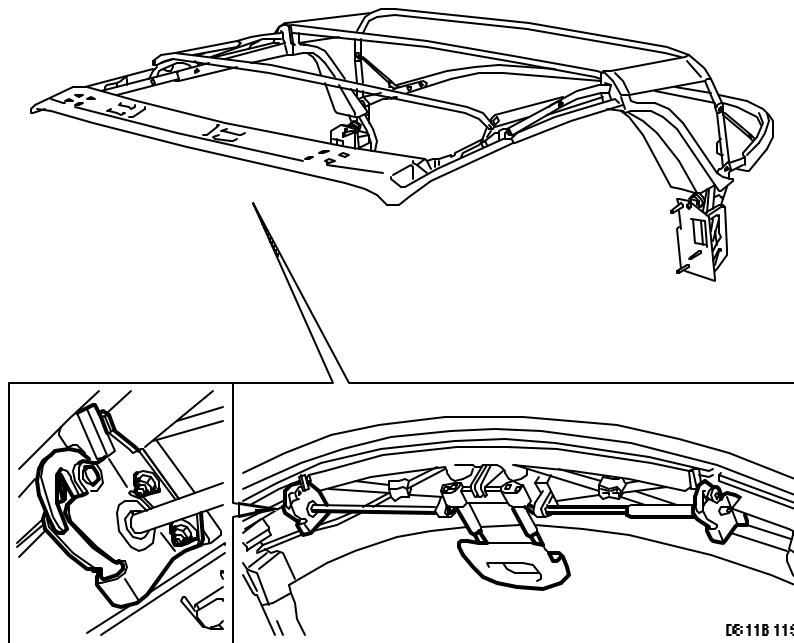


SERVICE INFORMATION

Bulletin Nbr: 811-2091
Date:.....Oktober 1999
Market: all

Rattling from inside the first bow and latch handle difficult to operate



Cars affected

Saab 9-3 Convertible up to and including VIN X7024103.

Background

On certain cars, it is possible that a rattling noise can be heard from inside the first bow. The sound can be traced to the first bow latch and latch handle.

Take the following measures after customer complaint.

Parts required

Procedure 1

51 81 995 Rubber bush (2 pcs) (CA: 30580928)

51 82 001 Spring clips (1 pc) (CA: 30584246)

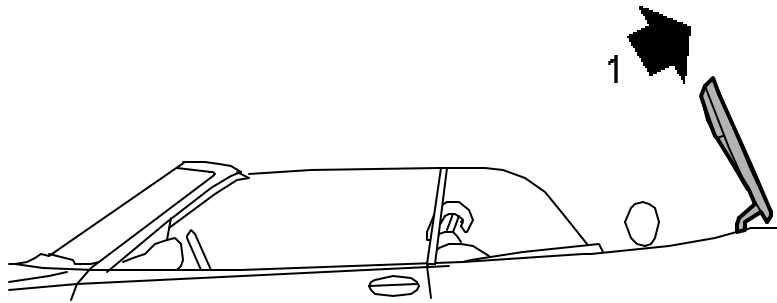
(16) 30 08 075 Adhesive (CA: 30559767)

(16) 30 20 476 Grease, Molycote 33 (CA: 3055997)

Procedure 2

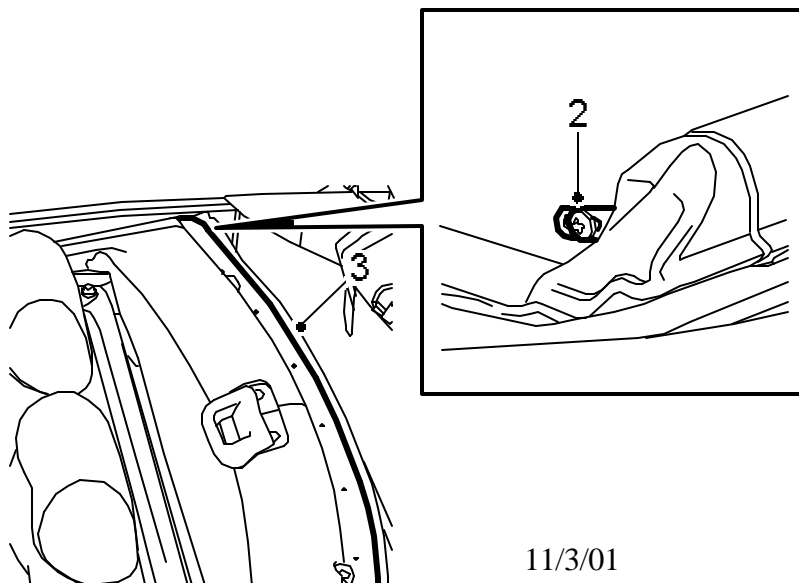
48 52 836 Shims (CA: 30573645)

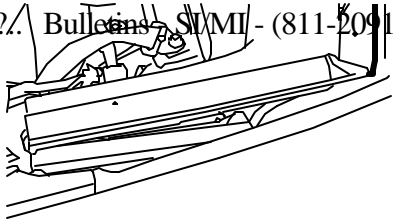
Procedure 1



D811B116

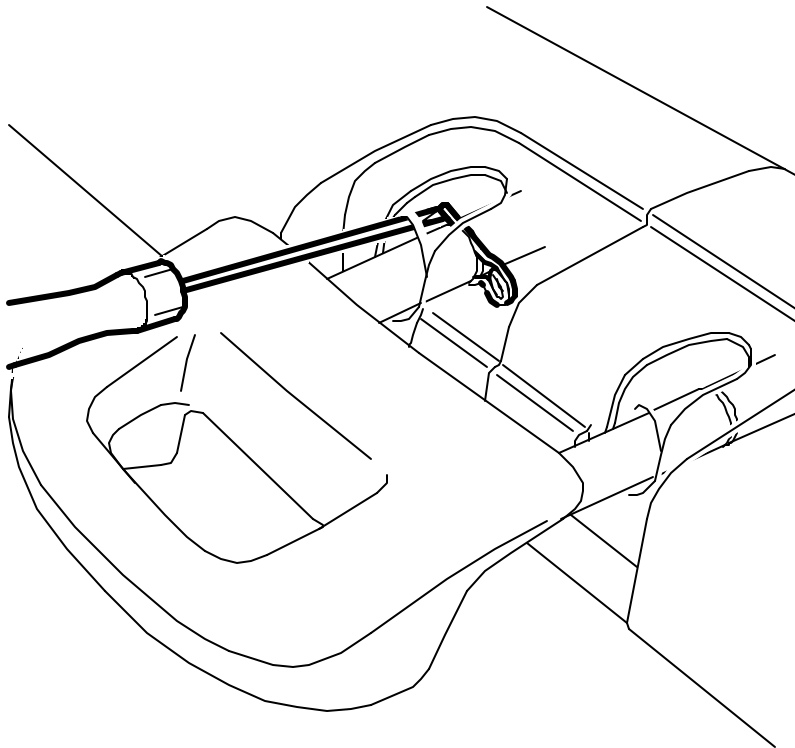
1. Operate the soft top to its lowered position (open). Leave the soft top cover in raised position.
2. Remove the front seal adjusting screws.





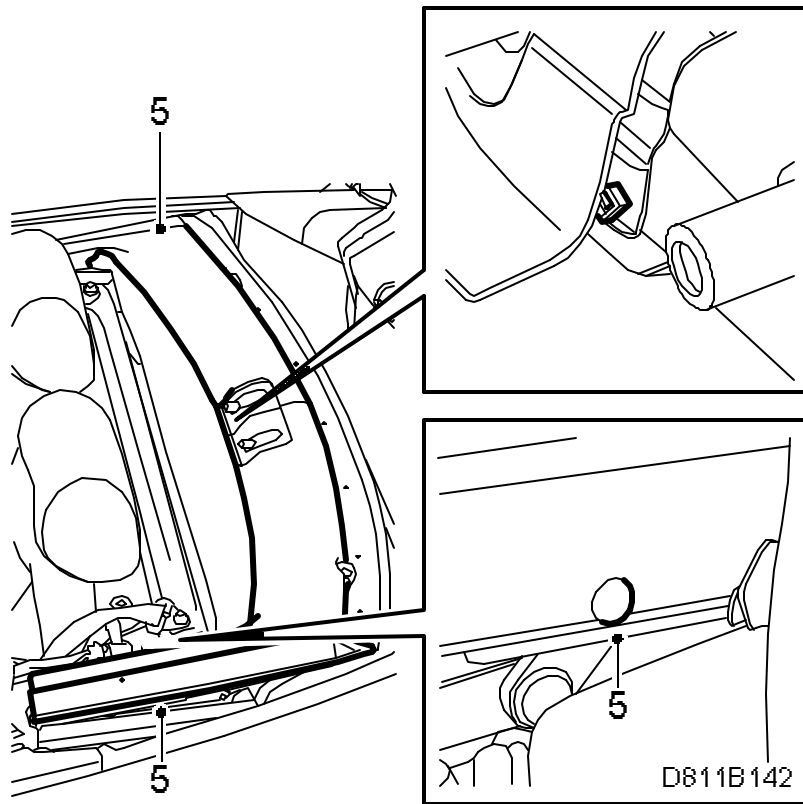
D811B117

3. Remove the retainer strip from the front edge of the first bow (9 screws).
4. Cover the headlining from the front of the handle with a clean rag. Release the handle by inserting a small screwdriver into the hole for the handle shanks and prise the pins out of the groove. Remove the handle.

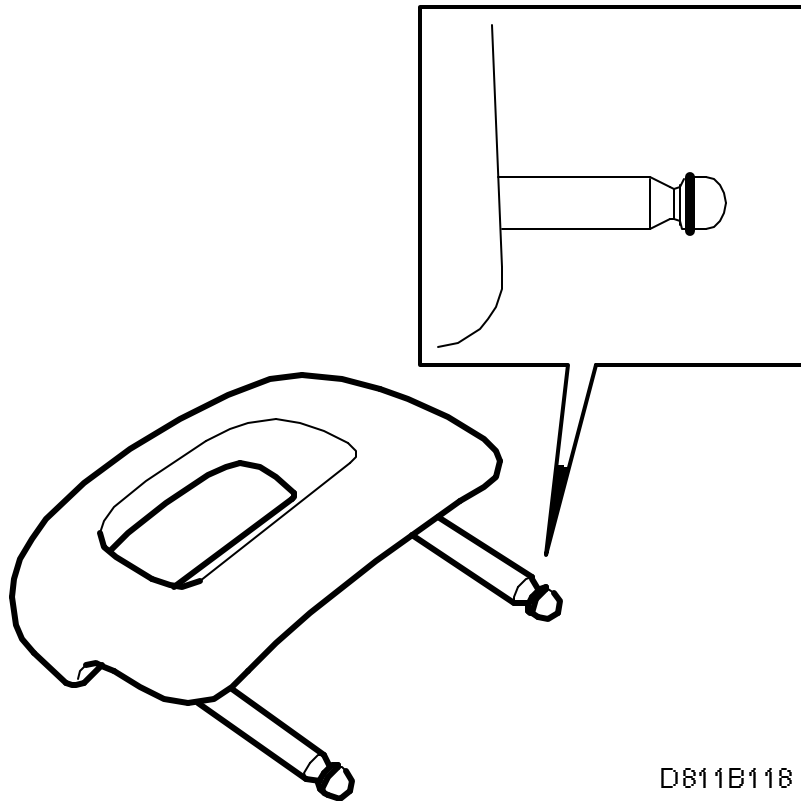


D811B141

5. Remove the cover that is fastened with two clips on the front rail. Cut off the cable tie securing the cover. Lift up the control handle 90° and remove the left-hand cover first.



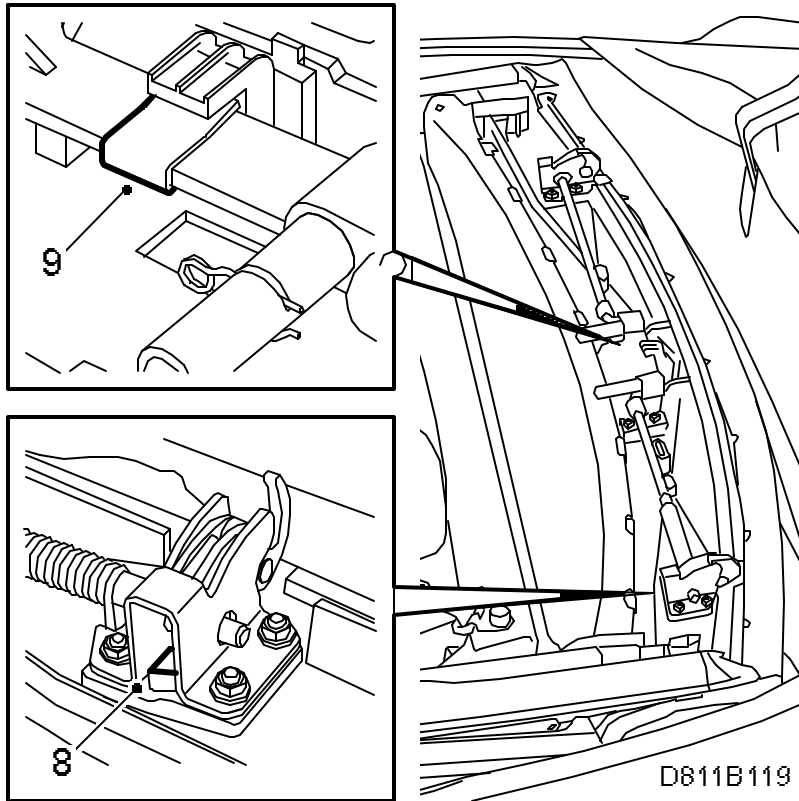
6. Remove the O-rings from the grooves in the handle shanks and throw them away.



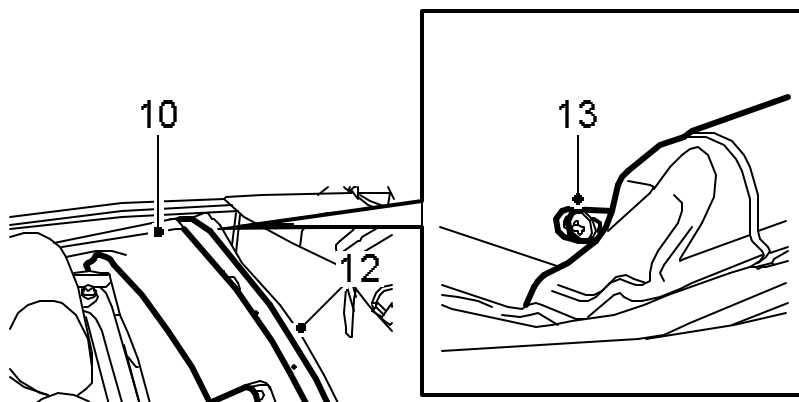
Note

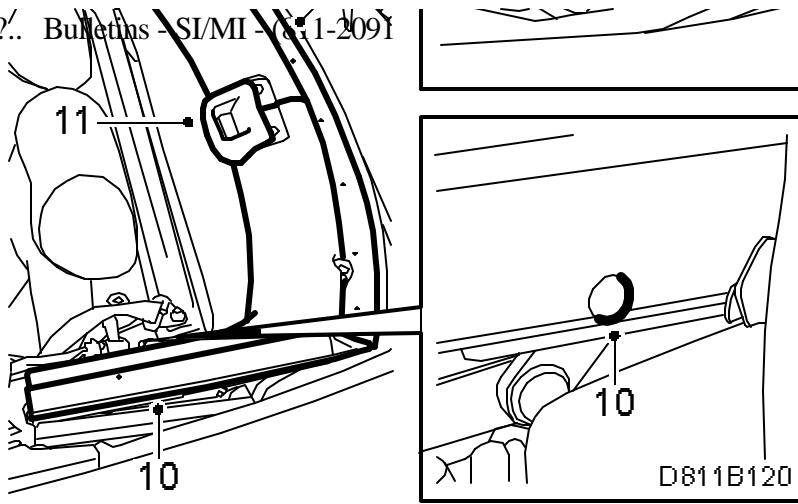
Throw the O-rings away, as they make the handle more difficult to operate.

7. Apply a drop of adhesive to the two rubber bushes, part no. 51 81 995.



8. Place the rubber bushes under each latch. The side of the bushes that has been prepared with adhesive is to be placed against the inside surface of the first bow. Lift the control handle mounting 90° to make it easier to locate the rubber bushes.
9. Fold back the cloth and replace the clip on the handle with the spring clip, part no. 51 82 001.
10. Fit the cover on the first bow. Lift up the control handle 90° and fit the right-hand cover first. Fit a cable tie. Make sure the front seal adjuster mounting is not lying under the covers.





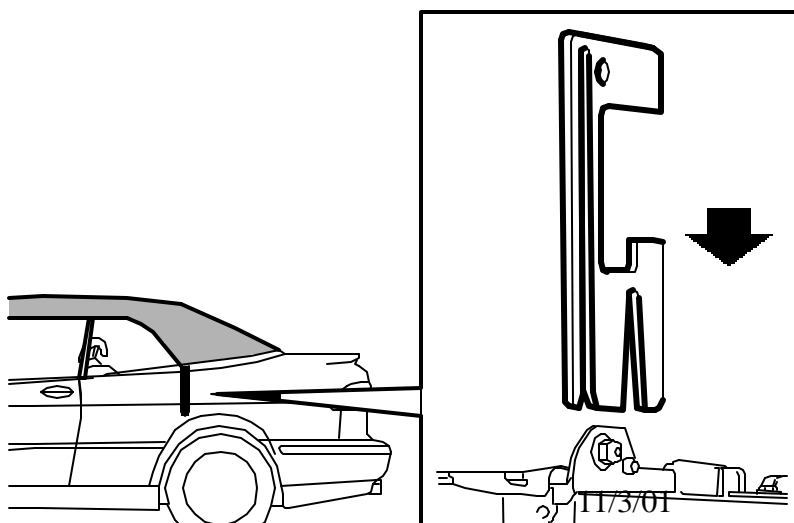
11. Apply grease, (16) 30 20 476, to the handle shanks and fit the handle. Remove the rag protecting the headlining.
12. Fit the retaining strip on the front of the first bow (9 screws), do not use the two long screws intended for the seal adjustment.

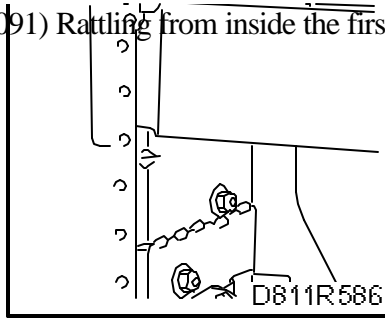
Important

Take care not to damage the latch magnets.

13. Screw in the two screws for the front seals.
14. Check the seal against the windshield (windscreen) frame and adjust as necessary.
15. Connect the diagnostic tool and erase any diagnostic trouble codes.
16. Perform a road test on an uneven surface and make sure the rattling has ceased.

If the sound has not ceased, "Procedure 2" must also be carried out.





1. Follow the instructions in WIS, "Convertible 9-3", "Adjustment/replacement", "Adjusting the soft top".
2. Follow the instructions carefully and ensure that the measurements between the special tool and the first bow are correct.
3. Add shims to the right and left-hand sides if necessary, part no. 48 52 836.
4. Check that the soft top is not too far from the inner windshield (windscreen) frame.
5. After adjusting, perform another road test on an uneven surface and make sure the rattling has ceased.

Warranty/Time information

Failed Object: 81123

Fault/Reason code: 43

Location code: 09 (US=0)

Warranty Type (US): 01

Repair/Action code: 01

Labour Operation (US):

Procedure 1: Use 81199 straight time 0.5 hrs (CA: B3980 0.5)

Procedure 2: "Adjusting stop" use 81199 straight time 0.2 hrs (CA: B3252 0.2)

Procedure 2: "Adjusting shims" use 81138 R&R adjusting plate 0.7 (CA: B3256 0.7)

Time: Procedure 1: 0.5 hrs.

Procedure 2: Adjusting stop 0.1 hrs.

Procedure 2: Adjusting shims 0.7 hrs.