

**SERVICE INFORMATION**

Bulletin Nbr: 811-2160

Date:.....Juni 1999

Market: all

**Soft top cover does not open or first bow hits soft top cover****Cars concerned**

All Saab 9-3 CV M98-M99.

**Background**

On certain cars, there have been occurrences where the soft top cover will not open when the soft top cycle is started. This may be due to a broken shear pin or locking pin in the mechanism.

In a few cases, the shear pin may be deformed, which will cause the soft top cover to continue its movement. Because the shear pin is deformed, the soft top cover cannot open completely, which means that the first bow will hit the soft top cover.

In case of complaints from customers, proceed as follows.

A new spare parts kit has been produced, which contains both a shear pin (ø4 mm) and locking pin (ø5 mm).

**Materials**

Spare parts kit 46 13 543 (CA: 30584931)

Contains shear pin (Dark grey, ø4 mm) and locking pin (ø5 mm)

**Procedure****Checking the shear pin**

Make sure the shear pin is not broken or deformed by carrying out the following procedure.

**Soft top down**

Start by raising the soft top.

- The soft top cover latch releases but the soft top cover does not open.
- Halt operation and try to open the soft top cover by hand. If the cover can be opened and closed easily, the shear pin is broken.
- If the soft top cover does open and the first bow hits it while being raised, the shear pin is deformed.

**Soft top raised**

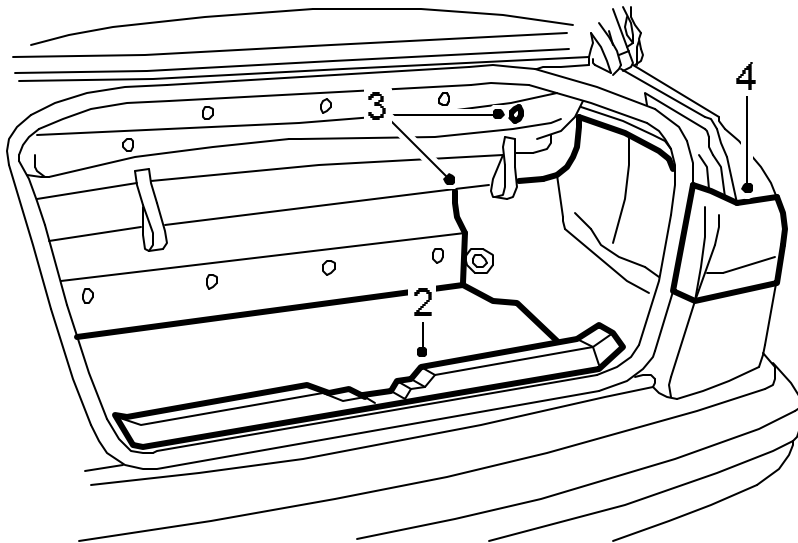
Start by lowering the soft top

- The fifth bow opens and the soft top cover latch releases but the soft top cover does not open.
- Stop the cycle and see if the soft top cover can be opened by hand. If it does not open and close easily, the shear pin has broken.
- If the soft top cover opens and the first bow hits it while being lowered into the soft top storage bag, the shear pin is deformed.

### Changing the shear pin and locking pin

Replace the shear pin and locking pin with the new ones in the spare parts kit.

1. Run the soft top to closed position with the fifth bow raised and the soft top cover lowered but not locked.
2. Open the boot lid and remove the scuff plate.



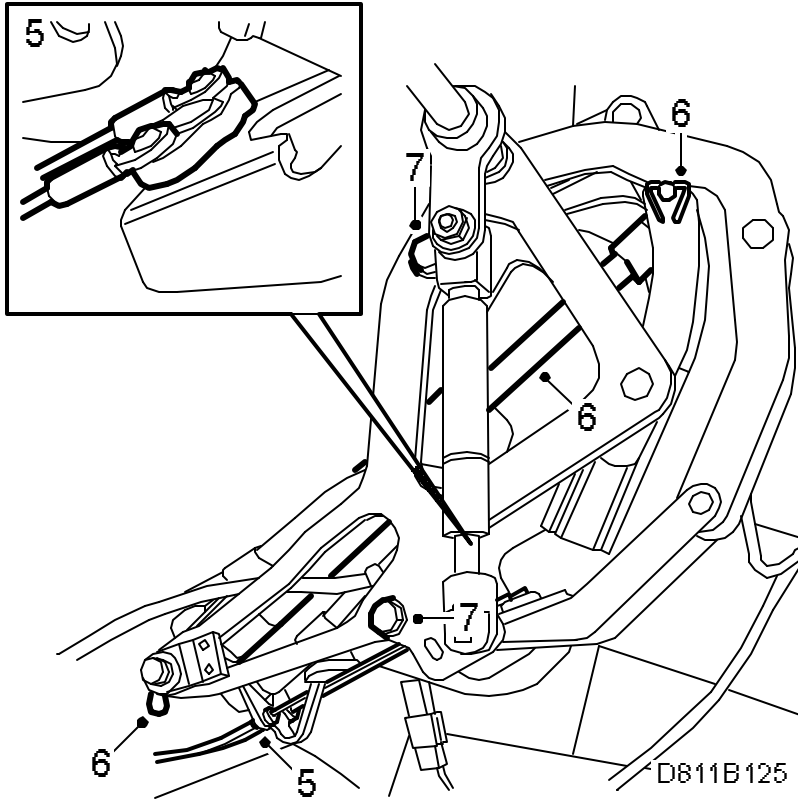
D811B124

3. Remove the luggage compartment upholstery on the right side and fold it aside.

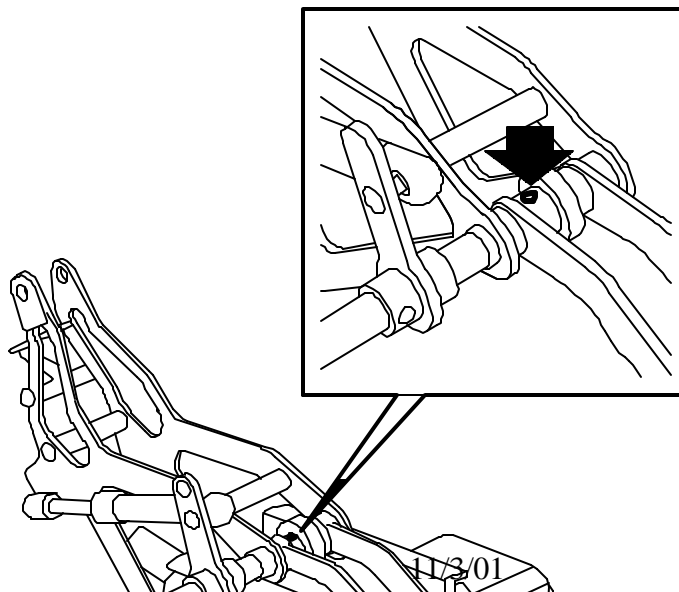
4. **Advice:**

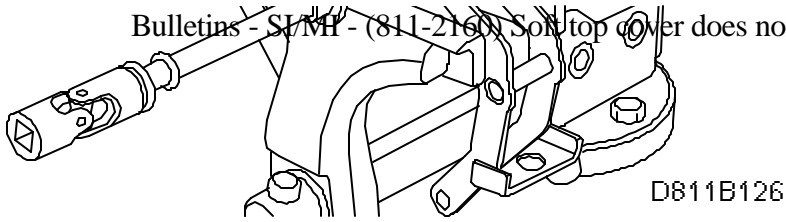
Remove the right light cluster for easier access to the drive mechanism.

5. Loosen the nuts that secure the cables for the mechanism and remove the clips.



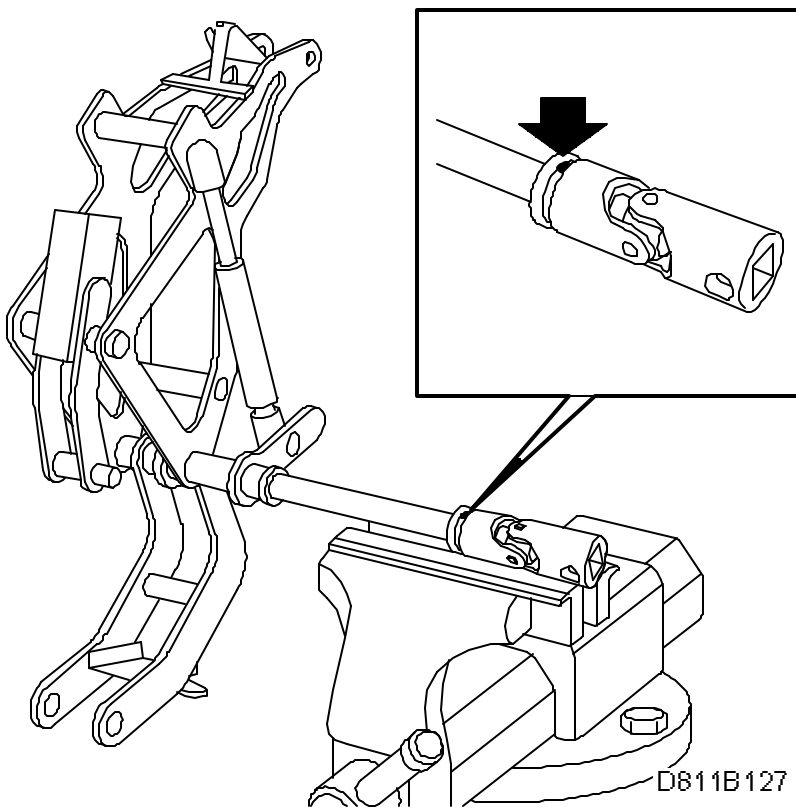
6. Remove the clips and stub axles that secure the cylinder. Lift away the cylinder and lay it at the front of the luggage compartment.
7. Undo the screws securing the mechanism and remove it.
8. Place the mechanism in a vice and tap out the locking pin.





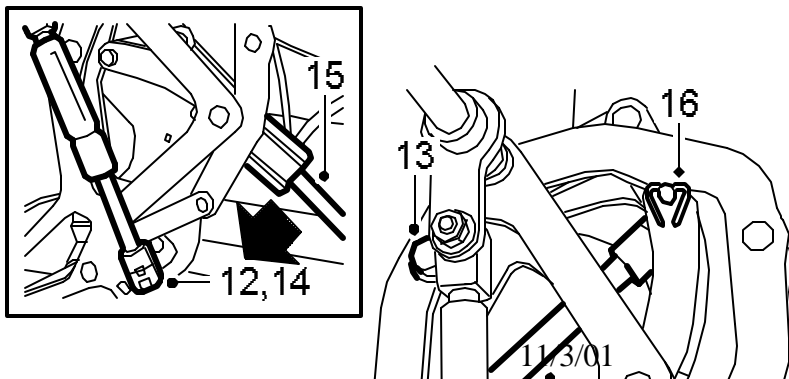
9. Fit a new locking pin  $\varnothing 5$  mm.

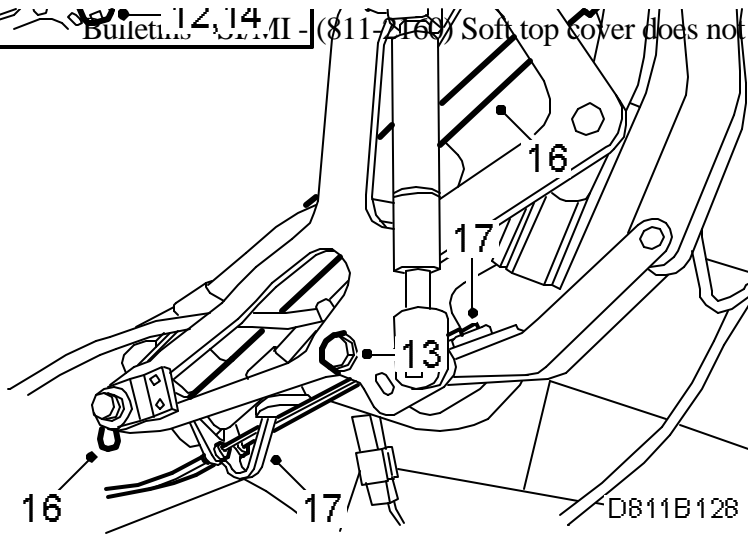
10. Place the mechanism in the vice so that the shear pin can be tapped out.



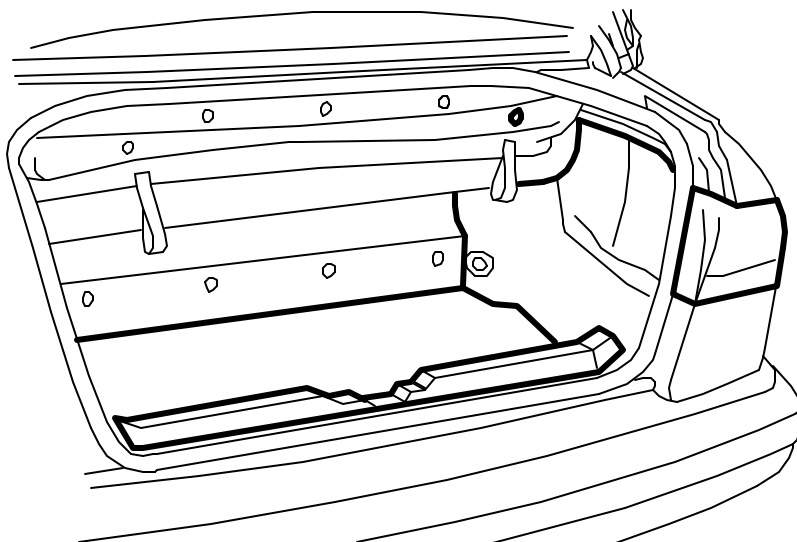
11. Tap out the shear pin.

12. Undo the lower damper mounting.





13. Fit the mechanism and tighten the bolts.
14. Fit the gas spring to its lower mounting.
15. Use an extension and press back the mechanism and spring to the correct position so that the cylinder can be fitted.
16. Fit the cylinder and fit the stub axles and clips.
17. Fit the cables and clips.
18. Fit the shear pin  $\varnothing 4$  mm (dark grey).
19. Fit the light cluster if it was removed and refit the luggage compartment trim and sill protection.



**Warranty/Time information**

Failed Object: 81195

Fault/Reason code: 72

Location code: 09

Warranty Type (US): 01

Repair/Action code: 01

Labour operation (US): Straight time (CA: B3254)

Time: 0.9 hrs.