

SERVICE INFORMATION

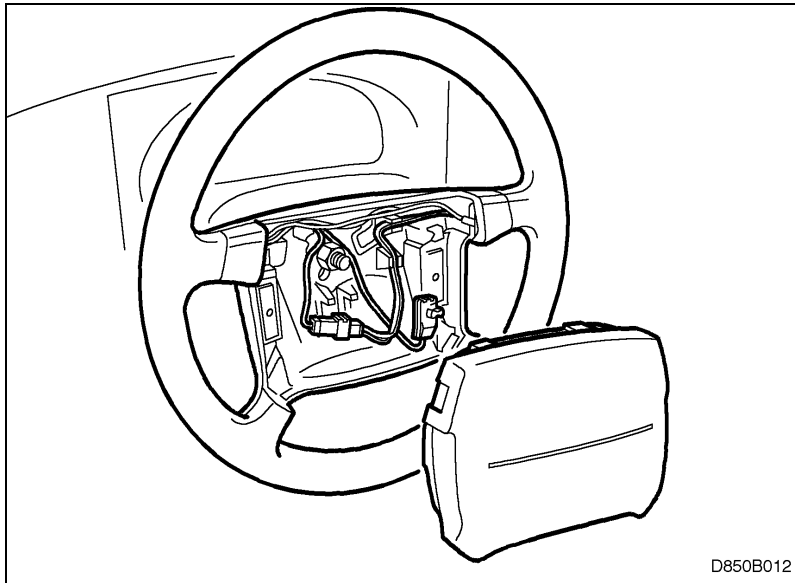
Number: 850-1744

Year: 1997

Month: MAY

Market: US

Disconnection and reconnection of the driver-side airbag



Cars affected

Saab 900 M90-93 and Saab 900 M94 onwards equipped with driver-side airbag

Background

This SI describes the method of disconnection of the driver-side airbag recommended by Saab for those owners with written approval for such disconnection from the National Highway Traffic Safety Administration, US DOT. Saab has no role in the decision to undertake such a disconnection or any subsequent reconnection.

Information/Parts Request Procedure

- The individual identified in the NHTSA approval must make a written request to Saab Cars USA, Inc. (Attention: Compliance) for this SI. The Vehicle Identification Number (VIN) of the applicable Saab automobile must be included.
- A copy of the written approval from NHTSA must be included with the above request.
- Saab will send this SI directly to the above individual.
- If the individual making the request wishes to use the following parts available from Saab through any authorized Saab dealer, the ordering dealer must include the VIN with the order.

Parts information

50 10 236 "Disconnection Kit" (for 900 driver-side airbag)

Contents:

Resistor

Fabric-backed tape

Foam plastic

Label

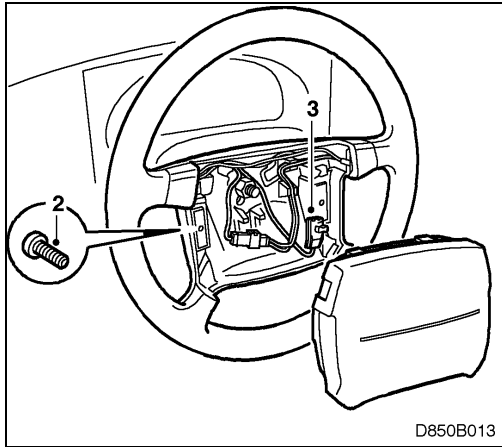
Label ("WARNING: This airbag module may only be reconnected by authorized service personnel").

To disconnect the airbag

To remove: four-spoke steering wheel, M90-93

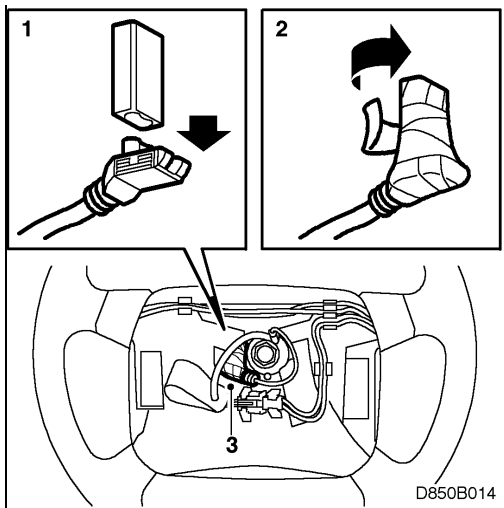
Make sure that the steering wheel is centred before starting work.

- 1 Disconnect the negative (-) battery lead.



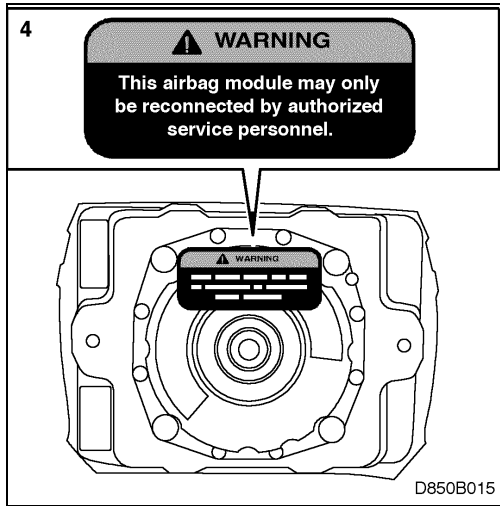
- 2 Undo the screws in the airbag unit.
- 3 Remove the unit and un plug the connector.

To fit: four-spoke wheel, M90- M93

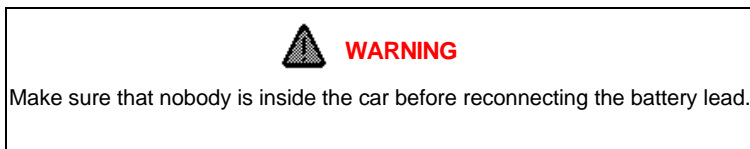


- 1 Fit resistor to the connector.
- 2 Wind at least five turns of tape round the connector and resistor.
- 3 Tuck the connector inside the steering wheel, towards the bottom.

- 4 Affix label above the switch on the airbag module.

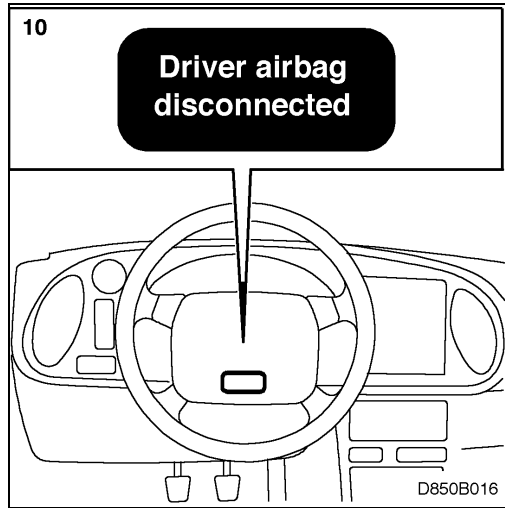


- 5 Refit the airbag unit in the steering wheel and tighten the screws.

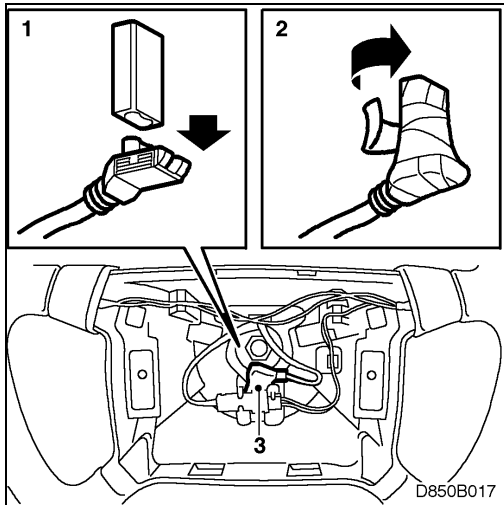


- 6 Reconnect the negative (-) battery lead.
- 7 Connect the ISAT scan tool and delete any diagnostic trouble codes (DTCs).
- 8 Switch on the ignition and wait at least 10 seconds. Check that the SRS symbol shows for 3 or 4 seconds and then goes out. Check that the SRS lamp is not indicating a fault (lamp remains on if fault detected).
If a DTC is displayed, carry out the diagnosis procedure as specified in Service Manual 8:6 SRS (Airbag).
- 9 Disconnect the ISAT scan tool.

10 Affix label in a visible position on the steering wheel.



To fit: four-spoke wheel, M94

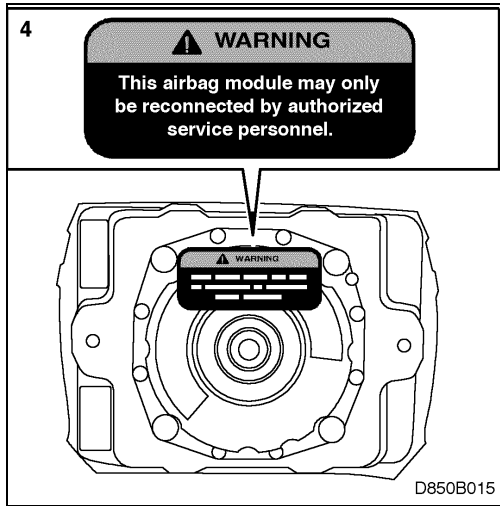


- 1 Fit resistor to the connector.
- 2 Wind at least five turns of tape round the connector and resistor.
- 3 Place the connector behind the connector holder for the horn.

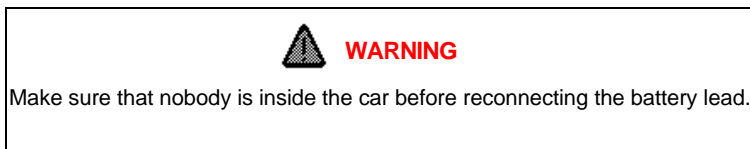
NOTE

The horn connector must not be rotated inside the holder.

- Affix label above the switch on the airbag module.

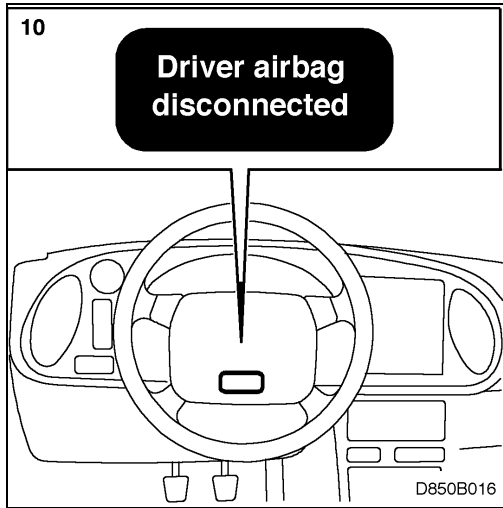


- Refit the airbag unit in the steering wheel and tighten the screws.

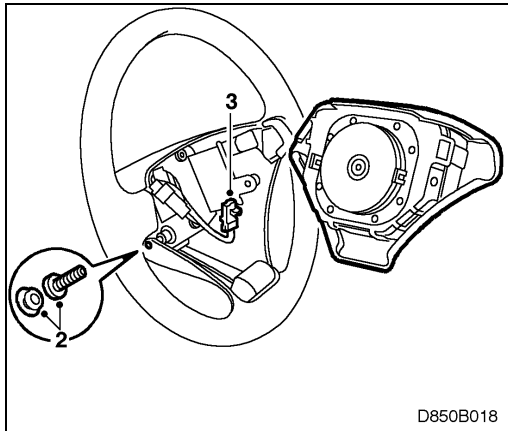


- Reconnect the negative (-) battery lead.
- Connect the ISAT scan tool and delete any diagnostic trouble codes (DTCs).
- Switch on the ignition and wait at least 10 seconds. Check that the SRS symbol shows for 3 or 4 seconds and then goes out. Check that the SRS lamp is not indicating a fault (lamp remains on if fault detected).
If a DTC is displayed, carry out the diagnosis procedure as specified in Service Manual 8:6 SRS (Airbag).
- Disconnect the ISAT scan tool.

10 Affix label in a visible position on the steering wheel.



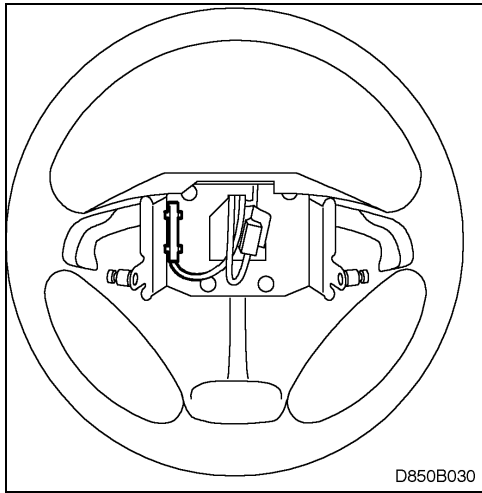
To remove: three-spoke steering wheel



Make sure that the steering wheel is centered before starting work.

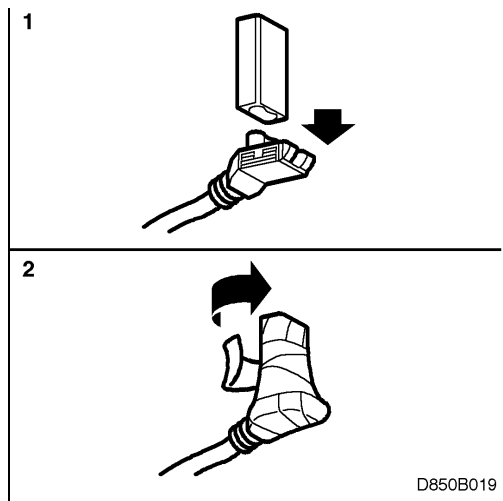
- 1 Disconnect the negative (-) battery lead.
- 2 Undo the screws in the airbag unit.
- 3 Remove the unit and unplug the connector.

To fit: three-spoke steering wheel



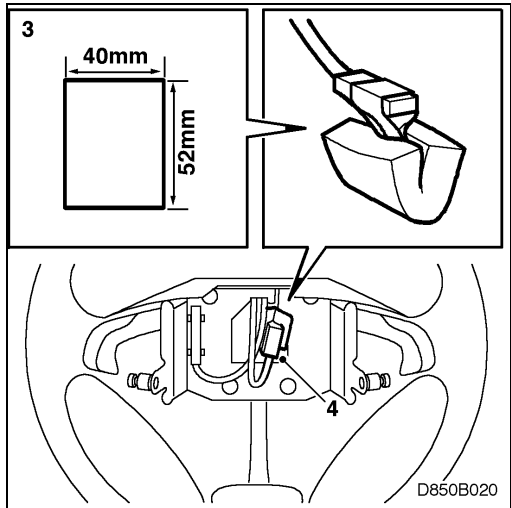
M95 - M96 with horn connector in 9 o'clock position.

- 1 Fit resistor to the connector.



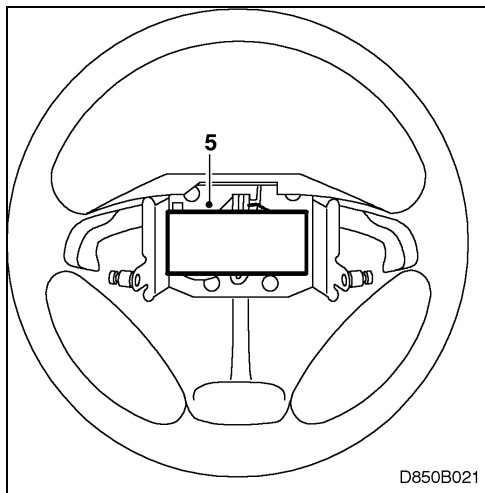
- 2 Wind at least three turns of tape round the connector and resistor.

- 3 Cut the foam to size (40 x 52 mm) and tape it round the connector.

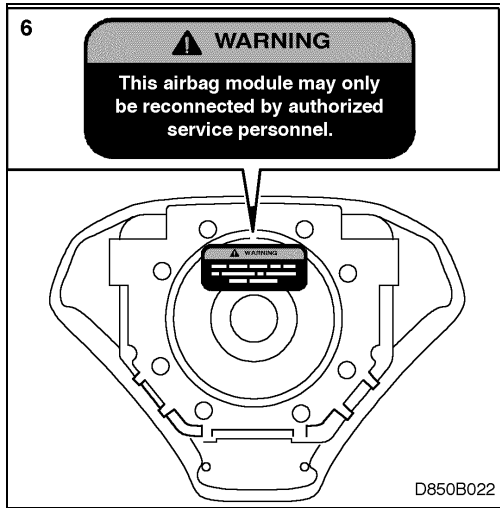


- 4 Place the connector inside the steering wheel as shown.

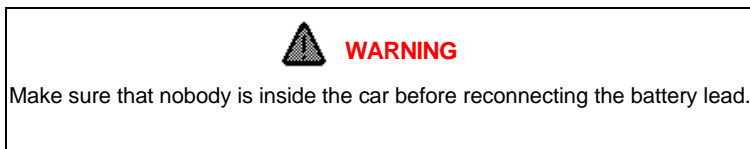
- 5 Place the remaining piece of foam, protective tape uppermost, over the connector. Do not remove the protective tape.



- 6 Affix label above the switch on the airbag module.

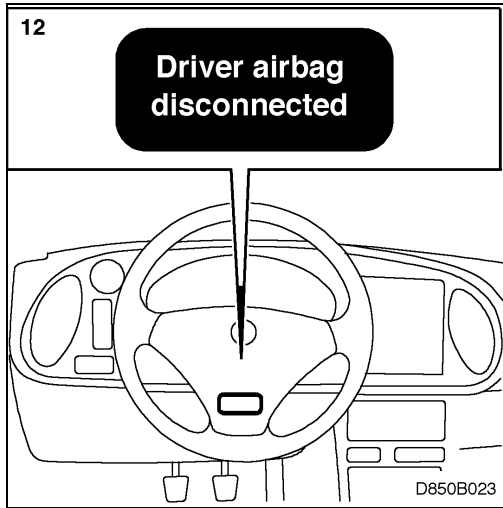


- 7 Refit the airbag unit in the steering wheel and tighten the screws.

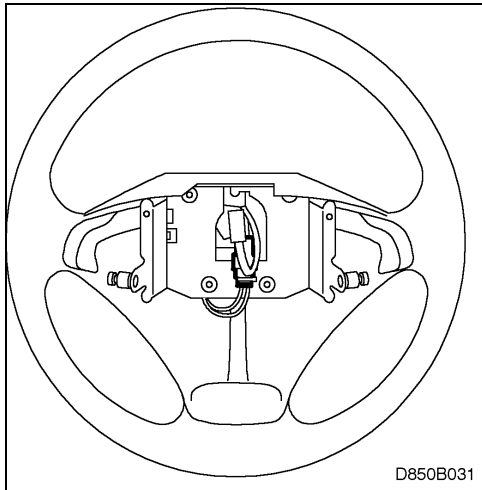


- 8 Reconnect the negative (-) battery lead.
- 9 Connect the ISAT scan tool and delete any diagnostic trouble codes (DTCs).
- 10 Switch on the ignition and wait at least 10 seconds. Check that the SRS symbol shows for 3 or 4 seconds and then goes out. Check that the SRS lamp is not indicating a fault (lamp remains on if fault detected).
If a DTC is displayed, carry out the diagnosis procedure as specified in Service Manual 8:6 SRS (Airbag).
- 11 Disconnect the ISAT scan tool.

12. Affix label in a visible position on the steering wheel.

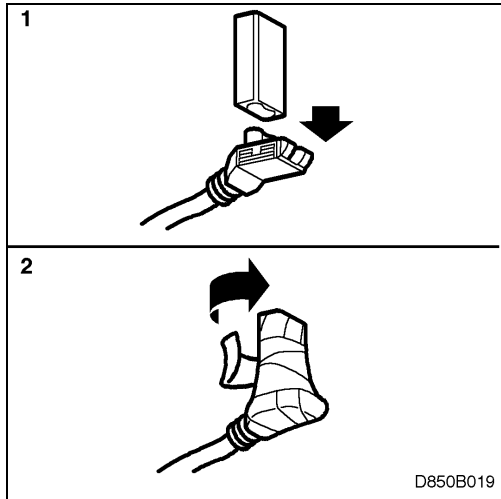


To fit: three-spoke steering wheel



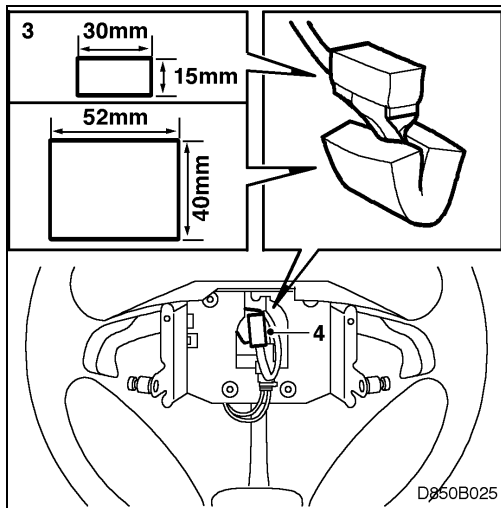
M96 - M97 with horn connector in 6 o'clock position.

- 1 Fit resistor to the connector.



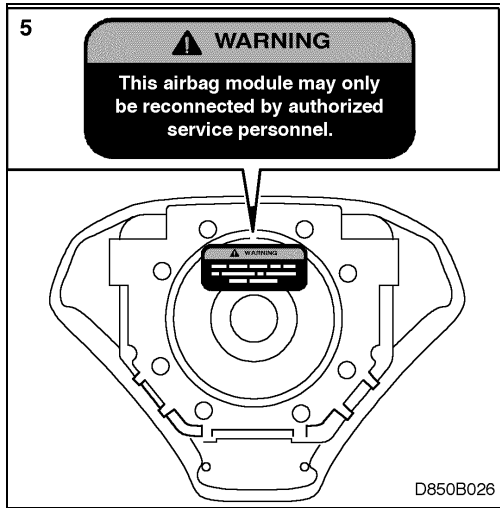
- 2 Wind at least three turns of tape round the connector and resistor.

- 3 Cut the foam to size (40 x 52 mm) and tape it round the connector. Cut another piece of foam to size (15 x 30 mm) and tape it onto the top of the connector.

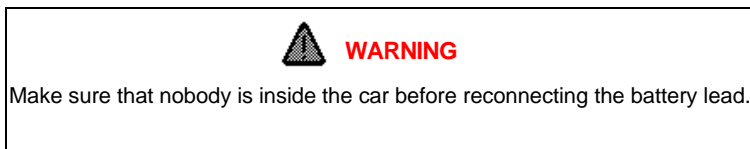


- 4 Place the connector inside the steering wheel and tuck it down as shown.

- 5 Affix label above the switch on the airbag module.

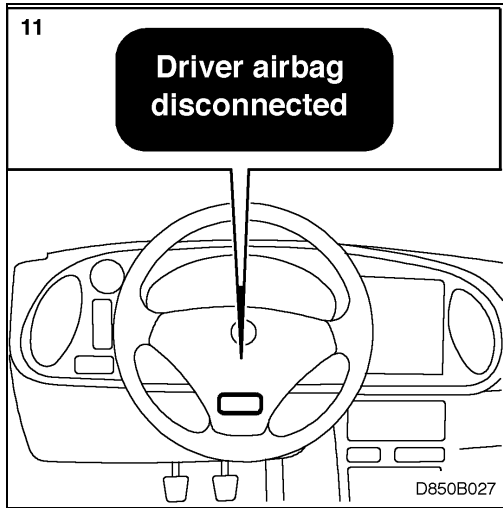


- 6 Refit the airbag unit in the steering wheel and tighten the screws.



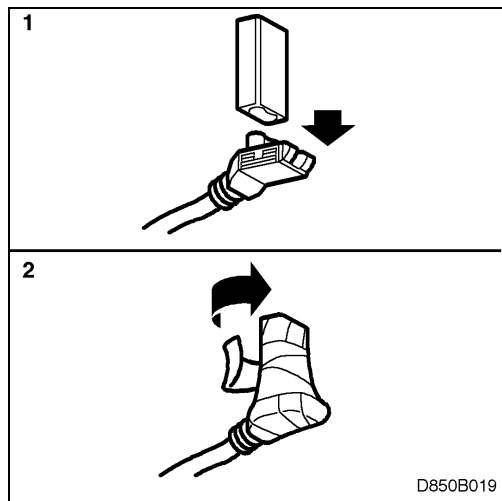
- 7 Reconnect the negative (-) battery lead.
- 8 Connect the ISAT scan tool and delete any diagnostic trouble codes (DTCs).
- 9 Switch on the ignition and wait at least 10 seconds. Check that the SRS symbol shows for 3 or 4 seconds and then goes out. Check that the SRS lamp is not indicating a fault (lamp remains on if fault detected).
If a DTC is displayed, carry out the diagnosis procedure as specified in Service Manual 8:6 SRS (Airbag).
- 10 Disconnect the ISAT scan tool.

11 Affix label in a visible position on the steering wheel.



To fit: three-spoke steering wheel

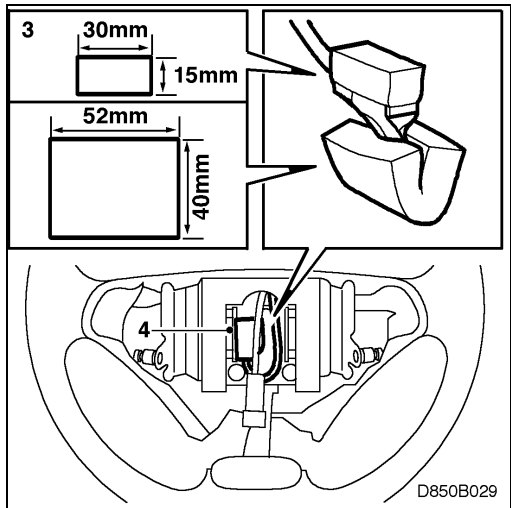
M96 - M97 with vibration damper (Automatics)



1 Fit resistor to the connector.

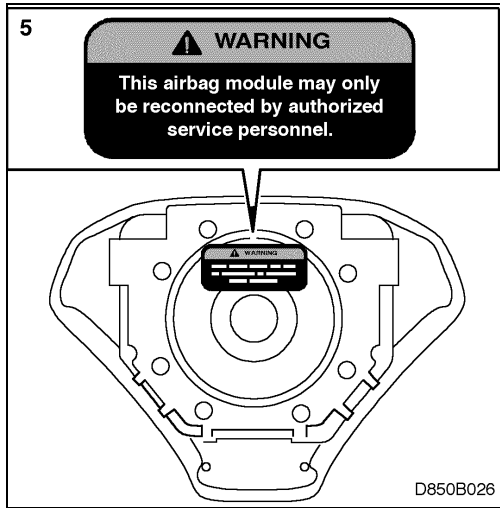
2 Wind at least three turns of tape round the connector and resistor.

- 3 Cut the foam to size (40 x 52 mm) and tape it round the connector. Cut another piece of foam to size (15 x 30 mm) and tape it onto the top of the connector.

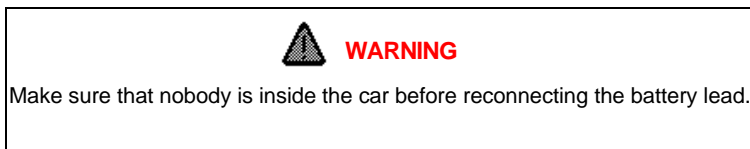


- 4 Place the connector inside the steering wheel and tuck it down as shown.

- 5 Affix label above the switch on the airbag module.



- 6 Refit the airbag unit in the steering wheel and tighten the screws.



- 7 Reconnect the negative (-) battery lead.
- 8 Connect the ISAT scan tool and delete any diagnostic trouble codes (DTCs).
- 9 Switch on the ignition and wait at least 10 seconds. Check that the SRS symbol shows for 3 or 4 seconds and then goes out. Check that the SRS lamp is not indicating a fault (lamp remains on if fault detected).
If a DTC is displayed, carry out the diagnosis procedure as specified in Service Manual 8:6 SRS (Airbag).
- 10 Disconnect the ISAT scan tool.
- 11 Affix label in a visible position on the steering wheel.



To reconnect the airbag

- 1 Disconnect the negative (-) battery lead.
- 2 Undo the screws in the airbag unit.
- 3 Remove the airbag unit.
- 4 Remove the tape, together with any pieces of foam, from the connector and remove the resistor.
- 5 Remove the warning label from the back of the airbag control module.
- 6 Plug in the connector to the airbag module.
- 7 Refit the airbag unit in the steering wheel and tighten the screws.
- 8 Remove the label from the steering wheel and clean off all traces of adhesive. Do not use solvents.



WARNING

Make sure that nobody is inside the car before reconnecting the battery lead.

- 9 Reconnect the negative (-) battery lead.
- 10 Connect the ISAT scan tool and delete any diagnostic trouble codes (DTCs).
- 11 Switch on the ignition and wait at least 10 seconds. Check that the SRS symbol shows for 3 or 4 seconds and then goes out. Check that the SRS lamp is not indicating a fault (lamp remains on if fault detected).
- 12 If a DTC is displayed, carry out the diagnosis procedure as specified in Service Manual 8:6 SRS (Airbag).
- 13 Disconnect the ISAT scan tool.