

SERVICE INFORMATION

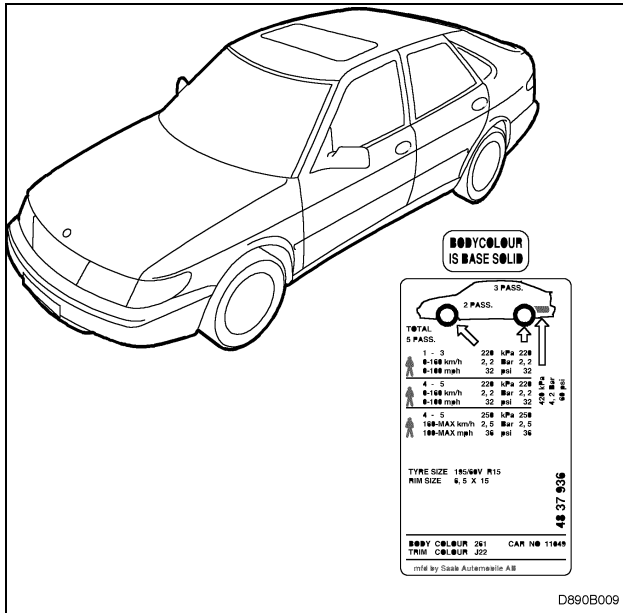
Number: 890-1881

Year: 1998

Month: JANUARY

Market: ALL

Base solid finishing paint with clear enamel



Cars affected

Saab 900 3D/5D and CV from M98

Background

Saab is successively changing over from using standard solid paint to a base solid finishing paint with clear enamel. There is a great risk of confusing these paint systems when respraying. Therefore, cars with base solid finishing paint are marked with a special label.

Metallic paint systems are not affected.

Colour codes are not affected.

Parts required

Current colours:

Imola red, colour code 240

Ambassador blue, colour code 198

Black, colour code 170

Note that cirrus white, colour code 153, and Monte Carlo yellow, colour code 231, will remain as standard solid paints.

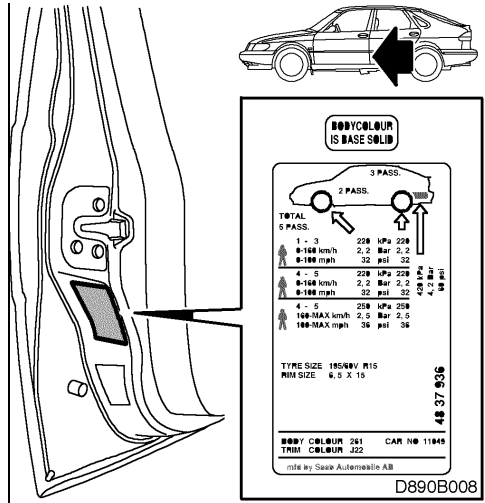
Touching up

Never mix the two paint systems as there is a difference in finish and ageing characteristics.

Never apply clear varnish on a standard single-coat solid paint (this does not have Saab Automobile AB quality approval).

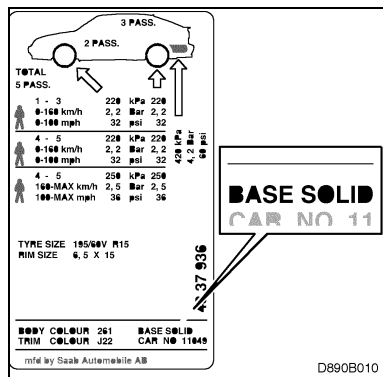
Spray and touch-up pens can be used as usual for minor repairs.

Markings during a transition period



Cars with base solid finishing paint have a label with the text **BODYCOLOUR IS BASE SOLID**. The label is located on the lower part of the left-hand front door, next to the ordinary colour code and tyre pressure label.

Final marking



When all production cars are painted with base solid finishing paint, the label will be discontinued. Instead, the ordinary colour code and tyre pressure label will have the text **BASE SOLID**.